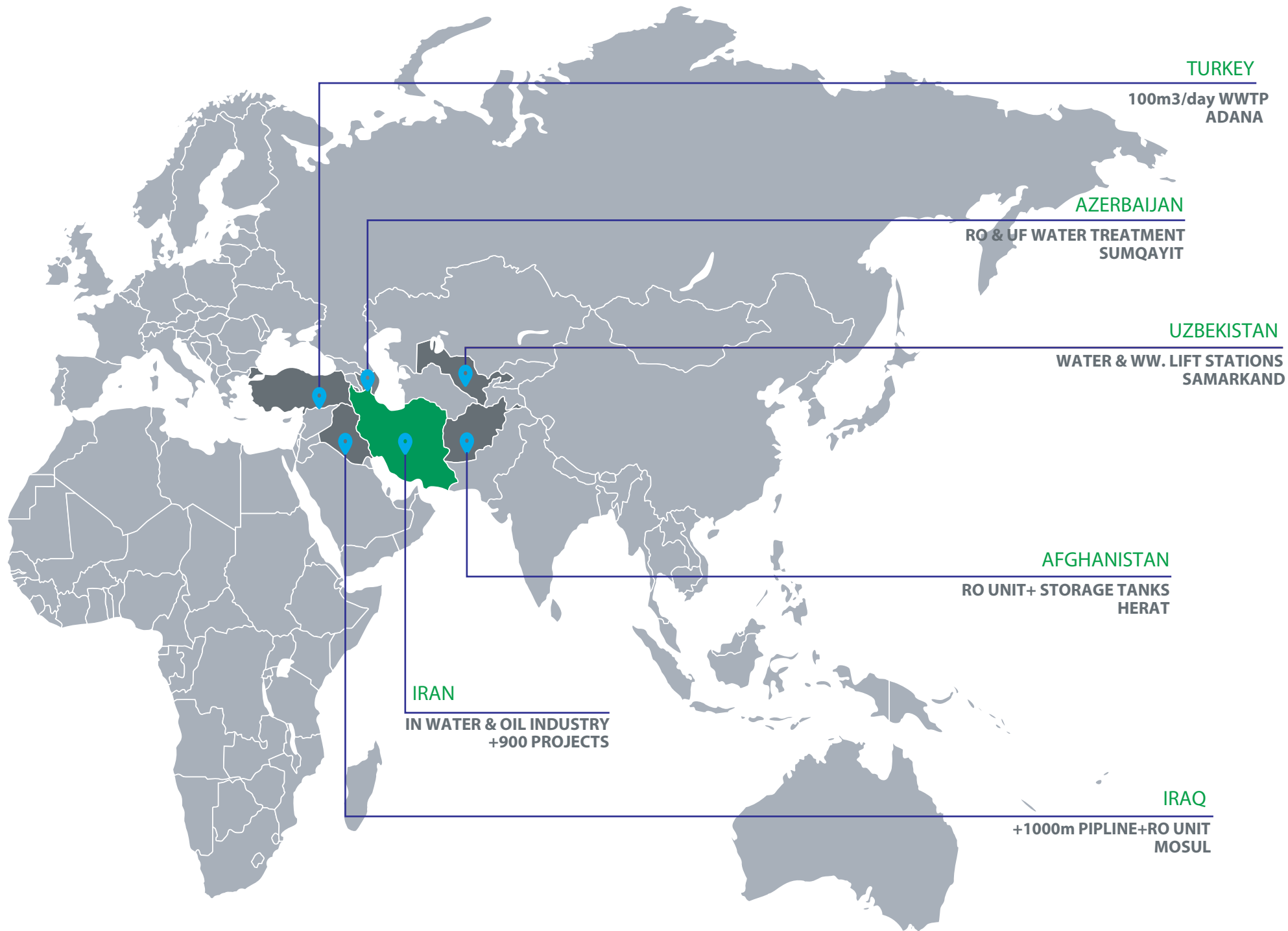




ABSAZE stands as a powerhouse in the water and wastewater solutions sector, as well as in the oil, gas, and petrochemical industries — delivering world-class engineering expertise and complete material supply solutions across the globe.

Our unmatched strength lies in the ability to source and supply any material or equipment, from standard industrial components to the most highly specialized, project-critical items. Through long-standing partnerships with leading international manufacturers and trusted global vendors, we guarantee our clients superior-quality products, fully compliant with international standards, delivered on schedule, and customized to operational requirements.

Our mission is bold and uncompromising: to be the first and only choice for companies seeking a one-stop solution in water, wastewater, oil, gas, and petrochemical industries — driving the sector forward with innovation, excellence, and a steadfast commitment to a sustainable future.



TURKEY

100m³/day WWTP
ADANA

AZERBAIJAN

RO & UF WATER TREATMENT
SUMQAYIT

UZBEKISTAN

WATER & WW. LIFT STATIONS
SAMARKAND

AFGHANISTAN

RO UNIT+ STORAGE TANKS
HERAT

IRAN

IN WATER & OIL INDUSTRY
+900 PROJECTS

IRAQ

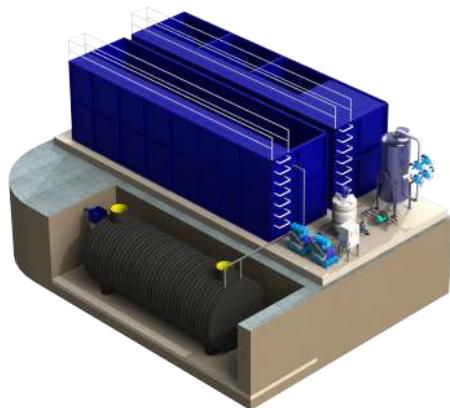
+1000m PIPELINE+RO UNIT
MOSUL

ABSAZE PRODUCTS

OVERVIEW

WATER TREATMENT

- INDUSTRIAL RO PACK.
- DEIONIZATION UNIT
- ELECTROCHLORINATOR
- RESIN SOFTENER
- SAND FILTER
- ACTIVATED CARBON FILTER
- HYDROCYCLONE FILTER
- UV DISINFECTION UNIT
- OZONE GENERATOR
- WATER TREATMENT CHEMICALS

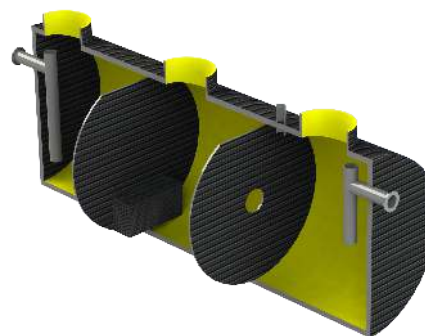


WASTEWATER TREATMENT

- STEEL WW. TREATMENT PACK.
- HDPE WW. TREATMENT PACK.
- GRP WW. TREATMENT PACK.
- SEPTIC TANK
- PUMP STATION
- OIL TRAP
- SCREENS
- FILTER PRESS
- AIR BLOWER & DIFFUSER
- PACKING MEDIA

POLYETHYLENE PRODUCTS

- HDPE VERTICAL TANK
- HDPE HORIZONTAL TANK
- HDPE SEPTIC TANK
- HDPE PUMP STATION
- HDPE SCRABER
- HDPE CORRUGATED PIPE
- POLYETHYLENE MANHOLE
- HDPE VALVE & FITTING



HVAC, STORAGE, CHEMICAL

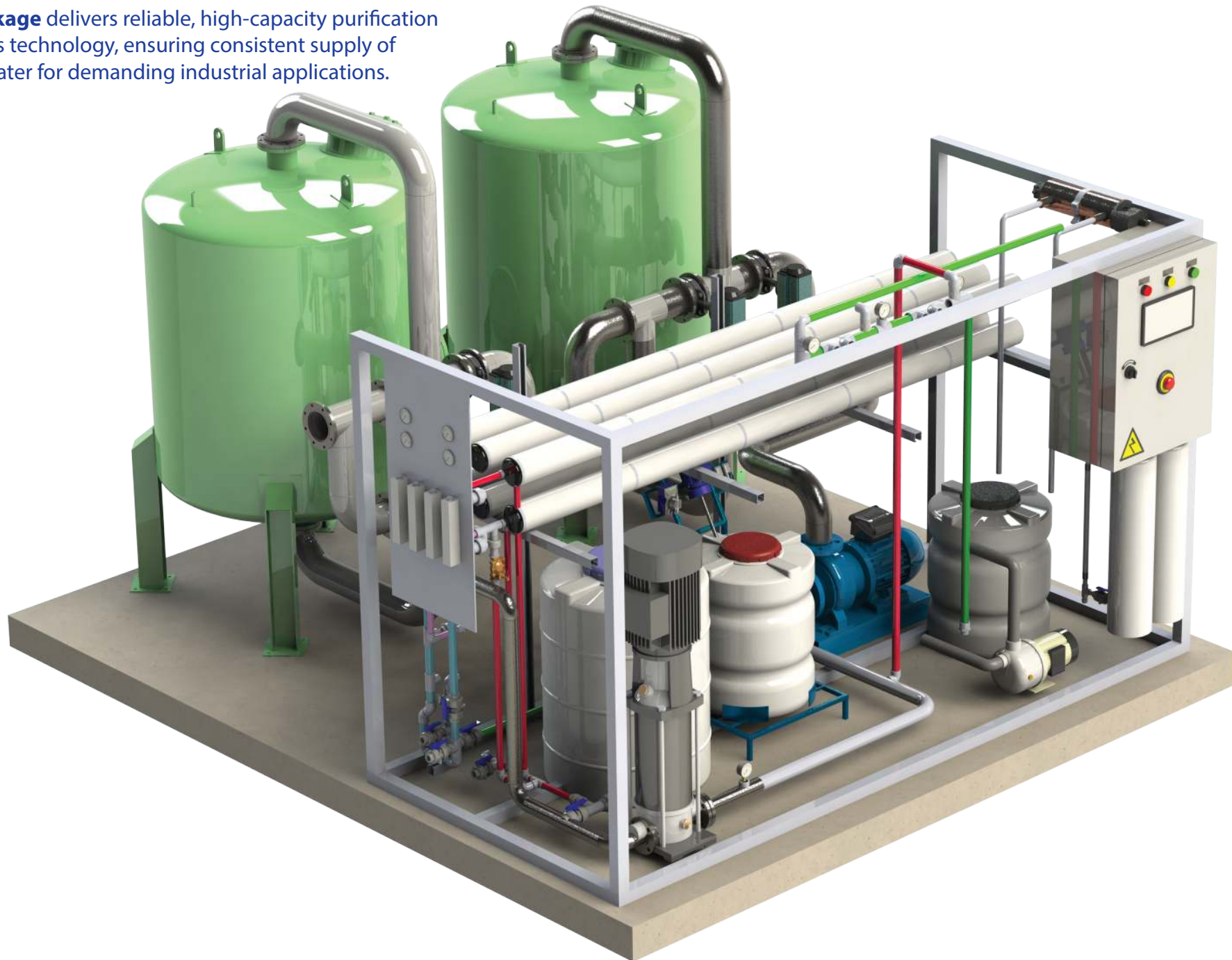
- PRESSURE VESSEL
- COIL TAK
- STEAM BOILER
- HOT WATER BOILER
- EXPANSION TANK
- DEAERATOR
- DOUBLE-WALLED TANK
- COLLING TOWER
- BOOSTER PUMP
- CHEMICAL DOSING PACK.
- HDPE ACID TANK
- GRP/ FRP STORAGE TANK

INDUSTRIAL RO PACK.

The **RO Water Treatment Package** delivers reliable, high-capacity purification with advanced reverse osmosis technology, ensuring consistent supply of clean, safe, and mineral-free water for demanding industrial applications.

CAPACITY

5 m³/day
10 m³/day
15 m³/day
20 m³/day
50 m³/day
100 m³/day
150 m³/day
200 m³/day
500 m³/day
1000 m³/day
1500 m³/day
2000 m³/day
3000 m³/day
4000 m³/day
5000 m³/day
10000 m³/day



PRE-TREATMENT UNITS

TYPES

MEDIA:

Sand Filter
Activated Carbon Filter
Multi-media Filter
Cartridge Filter
Micro-Filter

Material:

Stainless Steel
CS+Coating
FRP
PVC
PP



KEY FEATURES

Capacity:	2–200 m ³ /day
Material:	Corrugated Grade A Polyethylene
Efficiency:	Removes 50–70% of COD, BOD, TSS, etc.
Applications:	Hotels, residential/ industrial zone, hospitals, etc.
Strength:	High resistance to impact, pressure, & corrosion
Support:	Warranty & after-sales service included
Environment:	Odorless and noiseless operation

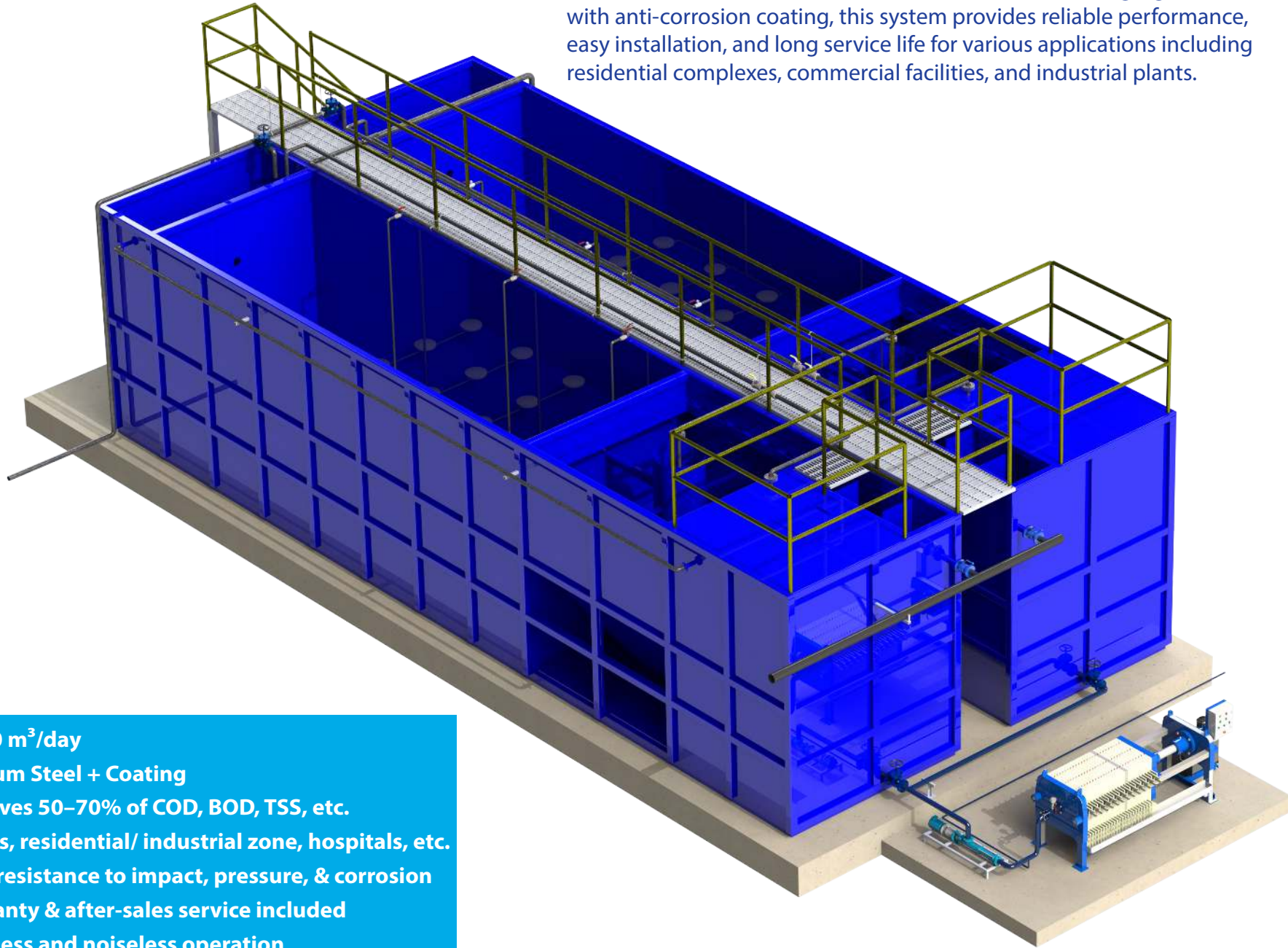


Robust Polyethylene wastewater treatment packages designed for reliable, long-term performance in municipal, commercial, and industrial applications.

HDPE WW. TREATMENT PACK.

STEEL WW. TREATMENT PACK.

A compact, durable, and corrosion-resistant unit designed for treatment of domestic and industrial wastewater. Constructed from high-grade C.S. with anti-corrosion coating, this system provides reliable performance, easy installation, and long service life for various applications including residential complexes, commercial facilities, and industrial plants.

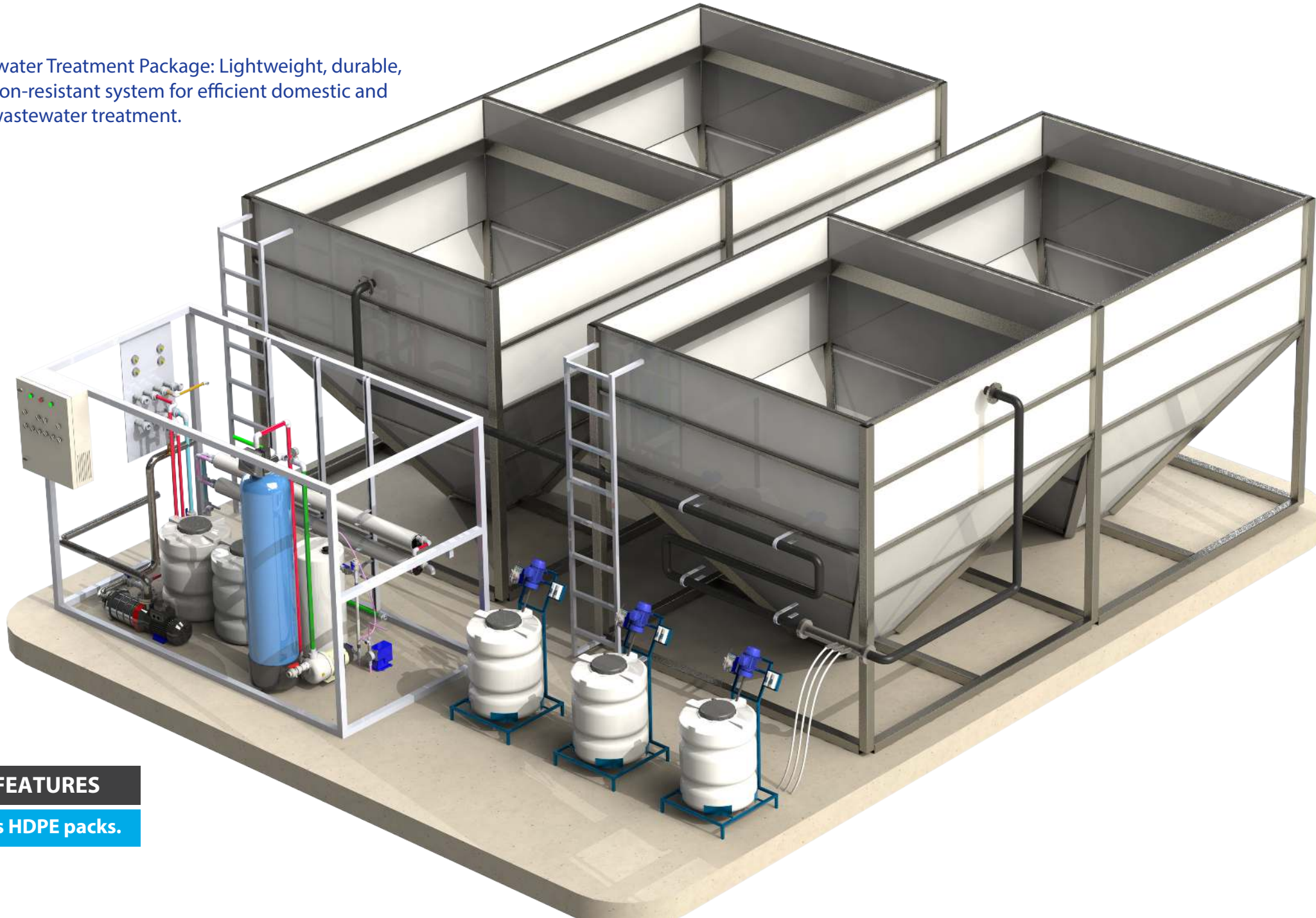


KEY FEATURES

Capacity:	5–400 m ³ /day
Material:	Premium Steel + Coating
Efficiency:	Removes 50–70% of COD, BOD, TSS, etc.
Applications:	Hotels, residential/ industrial zone, hospitals, etc.
Strength:	High resistance to impact, pressure, & corrosion
Support:	Warranty & after-sales service included
Environment:	Odorless and noiseless operation

GRP WW. TREATMENT PACK.

GRP Wastewater Treatment Package: Lightweight, durable, and corrosion-resistant system for efficient domestic and industrial wastewater treatment.

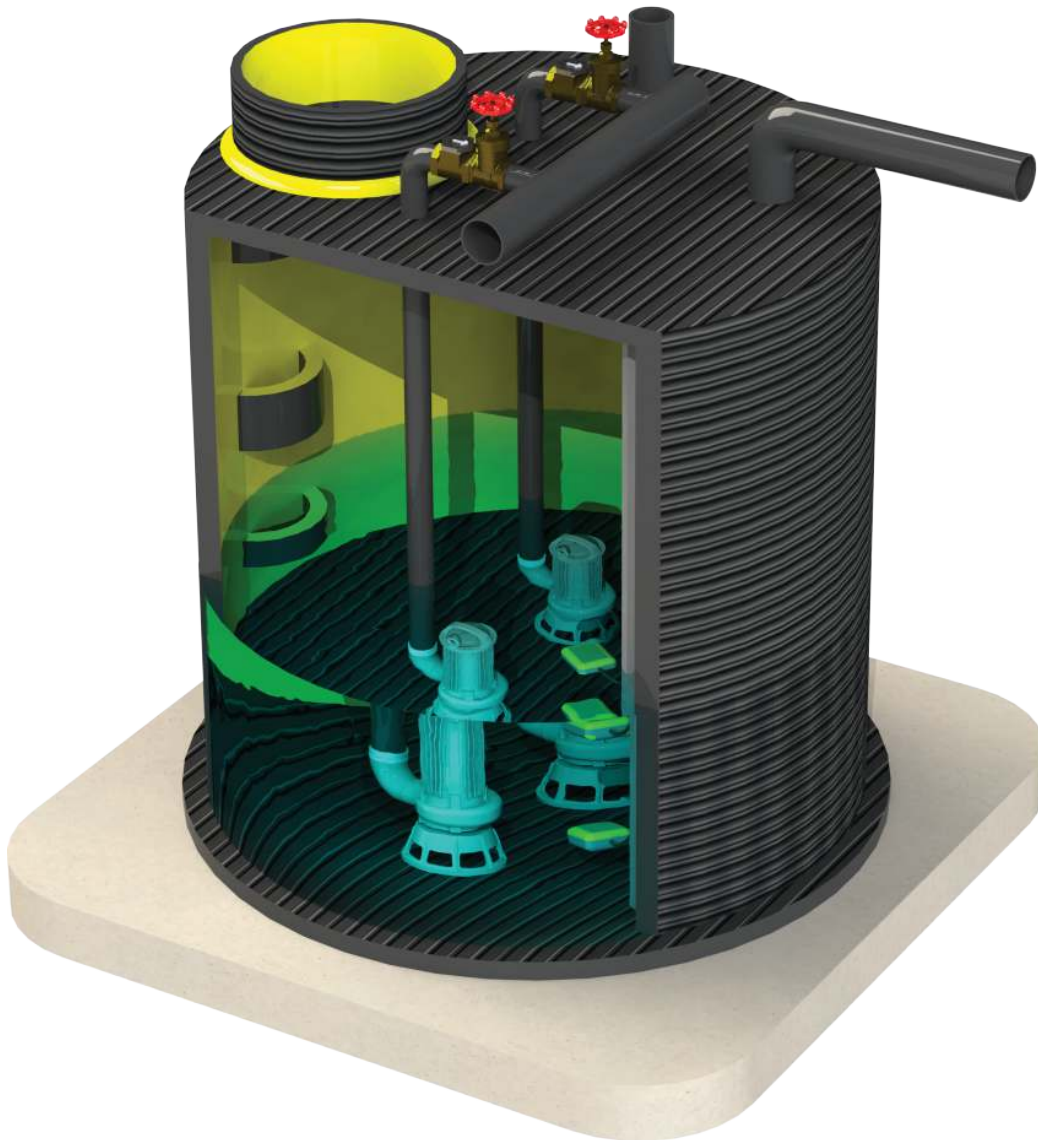


KEY FEATURES

As like as HDPE packs.

PUMP STATION

Pre-engineered pump stations manufactured from polyethylene, GRP, steel, or concrete, designed for reliable water and wastewater transfer. Equipped with automatic control systems, they offer easy installation, durability, and efficient operation for municipal, industrial, and commercial applications.



APPLICATIONS

In residential complexes

Basement sewage
Septic tank discharge

In industries

Industrial wastewater transfer
Collection tank discharge

In municipal sewer networks

Network pressure boosting
Transfer from low-lying areas
Flood control
WW. treatment package

MAIN PARTS

Sewage collection tank

Transfer & lift pump

Level instrumentation

Pipes, valves & fittings

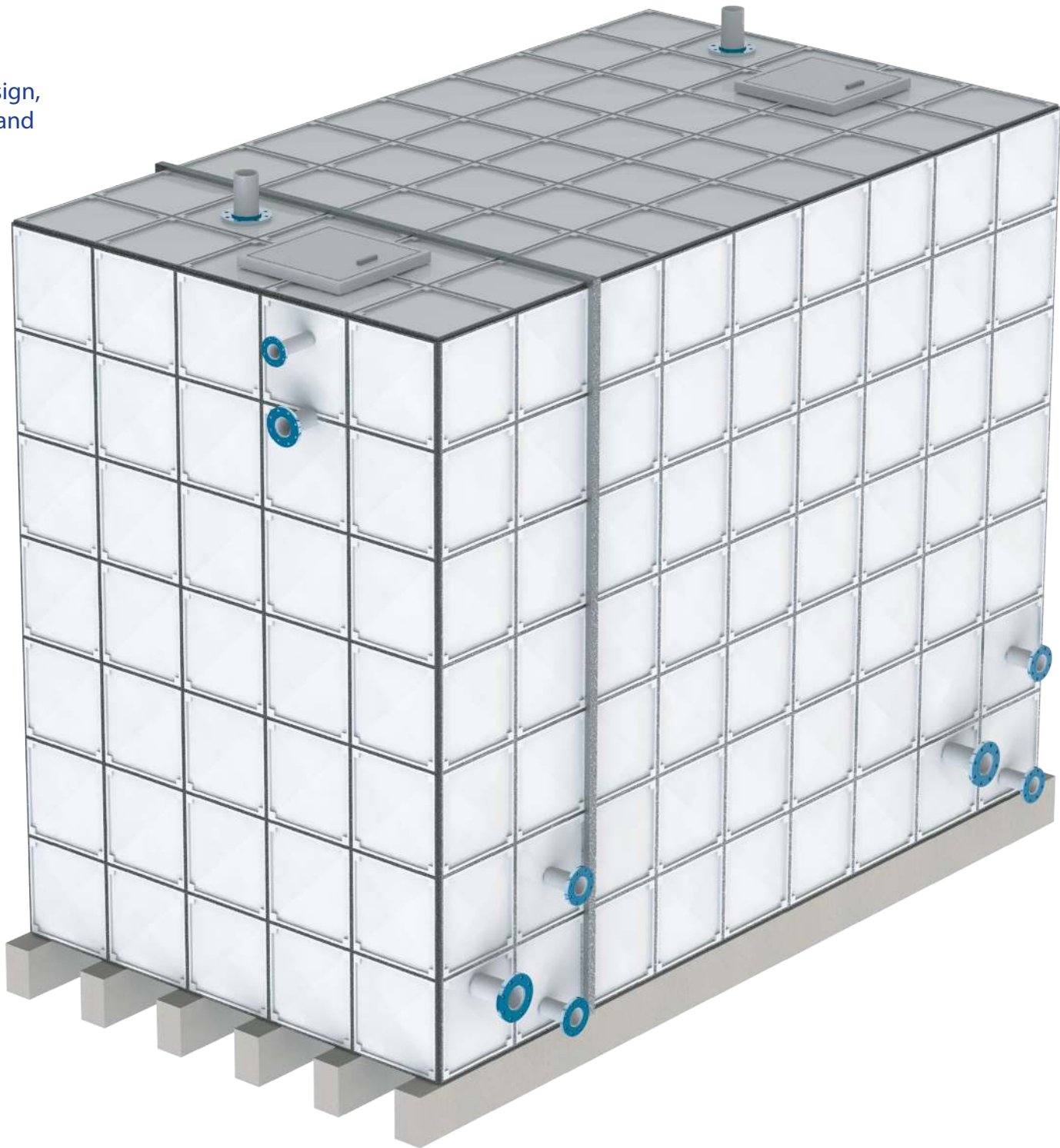
Control panel

Manhole & inspection cover

GRP TANK

High-strength Modular GRP tanks delivering flexible design, rapid installation, and long-lasting protection for water and chemical storage in demanding environments.

Capacity (L)	Dimensions (m)
4,000	2 × 2 × 1 (L×W×H)
6,000	3 × 2 × 1 (L×W×H)
8,000	2 × 2 × 2 (L×W×H)
12,000	3 × 2 × 2 (L×W×H)
16,000	4 × 2 × 2 (L×W×H)
20,000	5 × 2 × 2 (L×W×H)
24,000	4 × 3 × 2 (L×W×H)
30,000	5 × 3 × 2 (L×W×H)
36,000	6 × 3 × 2 (L×W×H)
40,000	5 × 4 × 2 (L×W×H)
45,000	5 × 3 × 3 (L×W×H)
48,000	6 × 4 × 2 (L×W×H)
50,000	5 × 5 × 2 (L×W×H)
60,000	5 × 4 × 3 (L×W×H)
75,000	5 × 5 × 3 (L×W×H)
100.000	10 × 5 × 2 (L×W×H)
150.000	15 × 5 × 2 (L×W×H)
200.000	10 × 10 × 2 (L×W×H)
300.000	15 × 10 × 2 (L×W×H)
400.000	20 × 10 × 2 (L×W×H)
500.000	25 × 10 × 2 (L×W×H)
1000.000	25 × 10 × 4 (L×W×H)



HDPE CORRUGATED TANK

Durable HDPE tanks designed for corrosion resistance, lightweight installation, and long-lasting, maintenance-free sewage treatment for residential and commercial use.

APPLICATIONS

- VERTICAL TANK
- HORIZONTAL TANK
- ACID STORAGE
- FUEL STORAGE
- SEPTIC TANK
- PUMP STATION
- HDPE SCRABER

DIMENSION

DIAMETER:

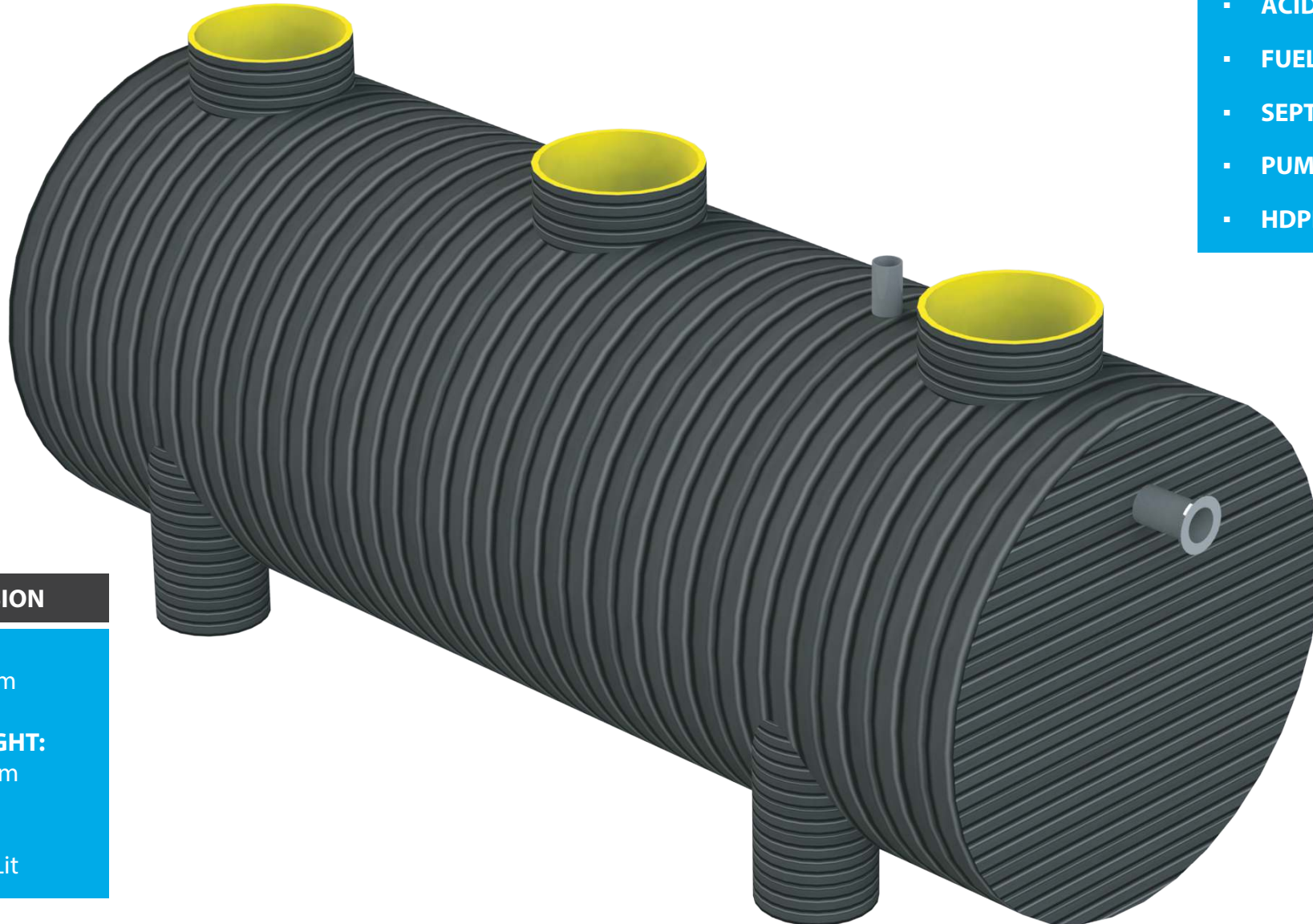
1000 - 3000 mm

LENGTH/ HEIGHT:

1000-14000 mm

CAPACITY:

800 - 100.000 Lit



HDPE CORRUGATED PIPE

HDPE corrugated pipes engineered for superior flexibility, easy jointing, high impact resistance, and reliable flow performance in drainage and stormwater systems.

DIAMETER (mm)

110

160

200

250

315

400

500

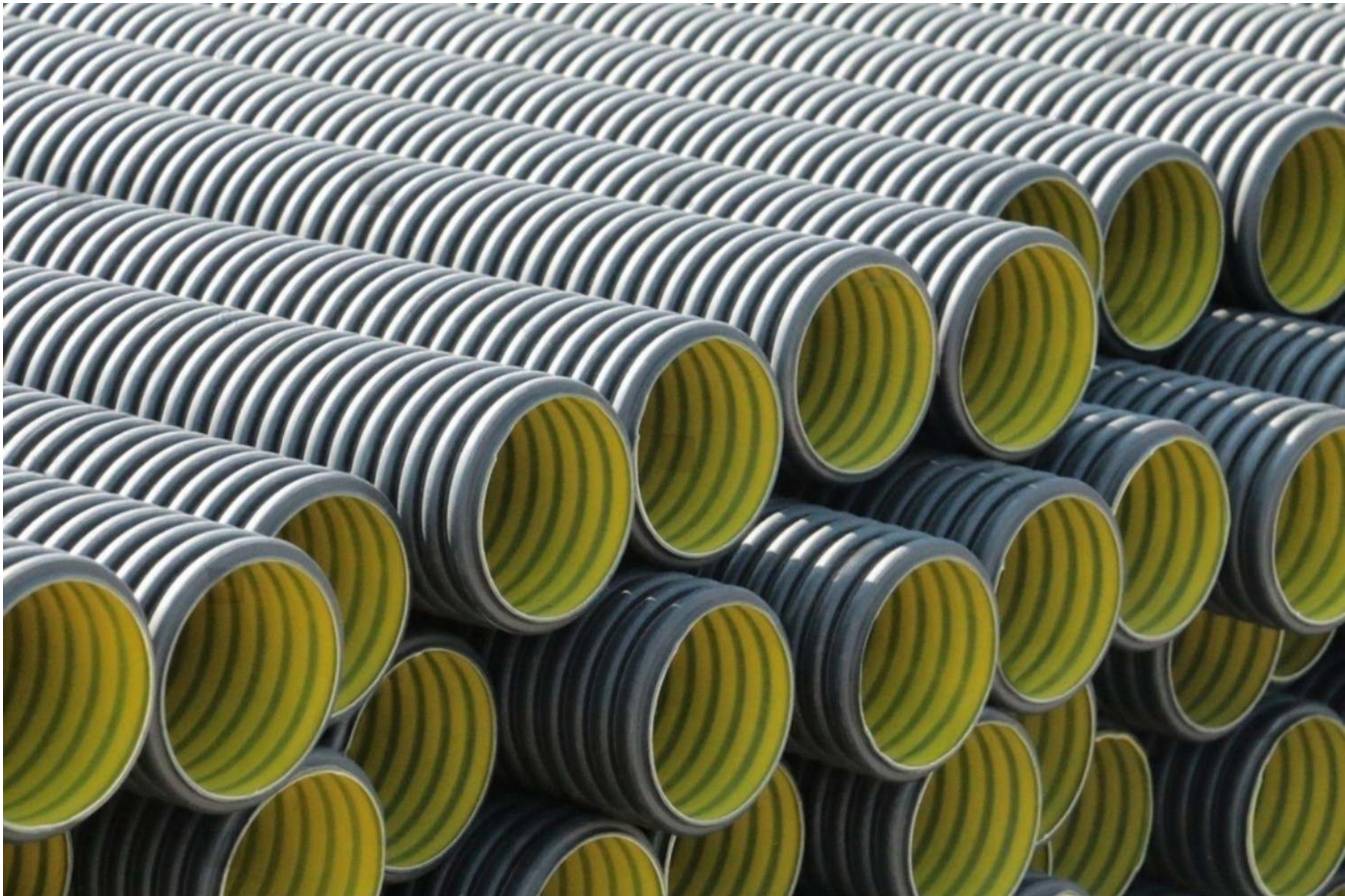
600

700

800

1000

1200



POLYETHYLENE MANHOLE

Made from high-quality polyethylene, this manhole is strong, lightweight, and corrosion-resistant—perfect for reliable sewer and drainage access. [ce solution for separating](#)

ADVANTAGES

- Service life over 60 years
- Easy and low-cost transport
- Quick installation
- Corrosion-resistant
- Superior abrasion resistance
- High chemical resistance
- Leak-proof structure
- Time and cost-efficient
- Suitable for deep burial applications
- Customizable design



FIBERGLASS OIL TRAP

Efficient, corrosion-resistant, and low-maintenance solution for separating oil, grease, and solids from wastewater. Ideal for restaurants, commercial kitchens, and industrial facilities. Available in multiple sizes.



Capacity (m ³)	DIM (cm)
0.1 (under-sink)	60 × 40 × 45
0.5	75 × 70 × 100
1	100 × 100 × 110
1.5	150 × 100 × 110
2	200 × 100 × 110
2.5	200 × 100 × 125
3	240 × 100 × 125
4	200 × 150 × 135
5	250 × 150 × 135
6	300 × 150 × 135
7	350 × 150 × 135
8	400 × 150 × 135
9	450 × 150 × 135
10	300 × 200 × 175
12	300 × 200 × 200
15	500 × 200 × 150
20	500 × 200 × 200
30	600 × 250 × 200
40	800 × 250 × 200
50	1000 × 250 × 200

FITERPRESS

A reliable, high-efficiency solution for solid-liquid separation. Built with durable materials, it delivers clear filtrate, dry cakes, and low operating costs—ideal for industrial and wastewater applications.

APPLICATIONS

Wastewater sludge
Pharma & food
Steel & iron
Ceramics & minerals
Textile & dyeing
Oil & Gas
Petrochemical
Sludge separation
Power plants
Aggregate & cement
Food & beverage
Chemicals
Municipal
Energy
Mining

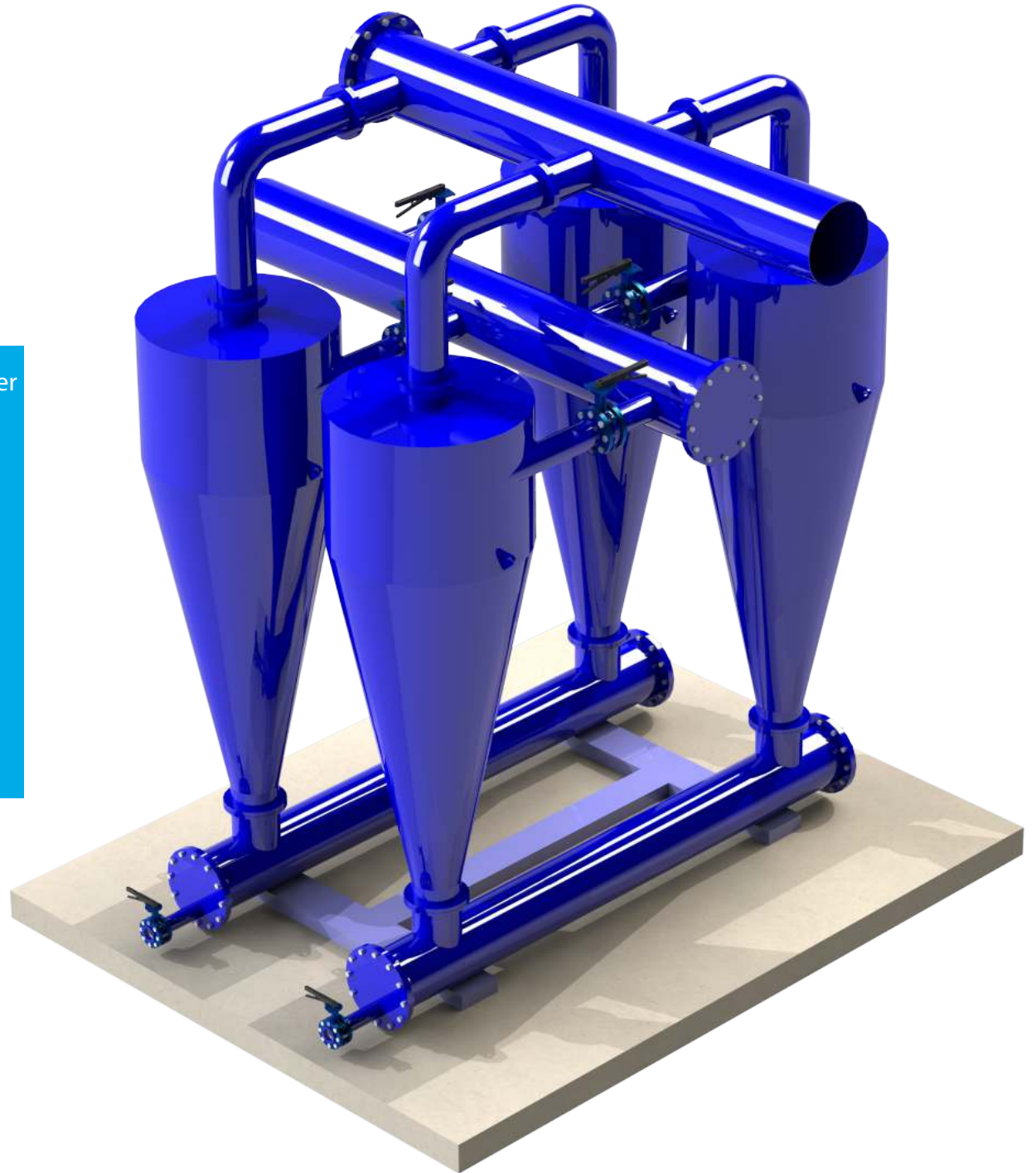


HYDROCYCLONE

Hydrocyclone Filter: Efficient separation of solids from liquids with no moving parts. High-capacity, low-maintenance design ideal for water treatment, industrial processes, and wastewater management.

APPLICATIONS

- Separation of sand and abrasive particles from well or river
- Removal of sand and gravel from groundwater
- Removal of suspended solids from industrial effluents
- Reducing the load on sand filters using hydrocyclones
- Pre-treatment for reverse osmosis (RO) units
- Treatment of agricultural well water
- Sand and gravel plants
- Tile and ceramic factories
- Starch and flour production plants



COOLING TOWER

High-performance FRP Cooling Towers – engineered for maximum efficiency, durability, and corrosion resistance, delivering reliable cooling even in harshest industrial env.

TYPES
Flow: Natural (Atmospheric) Mechanical (Forced, Induced, Hybrid)
Circuit: Open Closed Hybrid
Airflow: Crossflow Counterflow
Shape: Round Rectangular Hexagonal



BOILER

High-performance Industrial Boiler system engineered for efficient steam and hot water generation. Delivers consistent output, low fuel consumption, and long service life for a wide range of industrial and commercial uses.

TYPES

Heat transfer:

Fire Tube
Water Tube

Material:

Cast Iron
Carbon Steel
Stainless Steel

Fuel Consumption:

Natural Gas
Diesel
Electric
Solid Fuel
Dual Fuel
Biomass



ELECTROCHLORINATOR

Compact and efficient on-site sodium hypochlorite generator ensuring safe, reliable, and continuous disinfection — no chemicals, no risk, just pure performance.

APPLICATIONS

- Disinfection of drinking and sanitary water
- Disinfection of swimming pool and recreational water systems
- Disinfection of treated wastewater effluent
- Disinfection of process water in various industries
- Disinfection of industrial water e.g. cooling towers & desalination units
- Mobile water disinfection systems



RESIN SOFTENER

CAPACITY
15,000GPD
30,000GPD
60,000GPD
90,000GPD
120,000GPD
150,000GPD
200,000GPD
250,000GPD
300,000GPD
350,000GPD
450,000GPD
500,000GPD
600,000GPD
700,000GPD
800,000GPD
900,000GPD
1,000,000GPD
1,500,000GPD

TYPES
Performance: Automatic Semi- Automatic
Material: CS+Coating FRP

Industrial Water Softener: Protect equipment, extend system life, and reduce water hardness with high-performance, low-maintenance resin technology.



DEAERATOR

Deaerators – precision-engineered for efficient removal of dissolved gases from boiler feedwater, protecting your system from corrosion and enhancing overall performance and longevity.

Cap. (t/h)	Model	Storage (m ³)	H × Ø (cm)
2	D2	0.9	120 × 40
5	D5	1.57	150 × 40
7	D7	2.2	150 × 60
10	D10	3.4	180 × 60
15	D15	4.3	180 × 70
20	D20	5.3	180 × 75
30	D30	7	180 × 80
45	D45	10	200 × 90
50	D50	12.5	200 × 90



FILTRATION MEDIA

Ion-exchange resin
Silica Sand
Anthracite
Activated carbon

RO memberane
Cartridge Filter
Manganese dioxide
Gravel

Zeolite
Garnet
Ceramic
Quartz Sand



WE ARE trusted by...



شرکت پتروشیمی اروند



شرکت پتروشیمی شیواز (جاسی مار)



شرکت ملی منابع نفتی جنوب



شرکت پتروشیمی تویز (تیسر مار)



شرکت پتروشیمی مارون



شرکت فولاد هرمزگان



شرکت بابک مس ایرانیا



MIDHCO



شرکت پروامید آسیا



شرکت فولاد خوزستان



فولاد روینا جنوب



MAPNA GROUP



کیسون



فناپ
FANAP



Exir Sanat Co.
Engineering & Construction



سایا



صنایع غذایی ایران
Iran Food Industries



عمران مارون



MANA SAZ



شرکت مهندسی مهاب مکانیک
(سهامی خاص)



شرکت سوخت راکتورهای هسته ای
NUCLEAR REACTORS FUEL Co.
سهامی خاص (F.O.P.I.C.)



مکران
شرکت کشت و صنعت (سهامی خاص)



اسکان ایران
ESKAN IRAN CO.

WWW.ABSAZE.COM